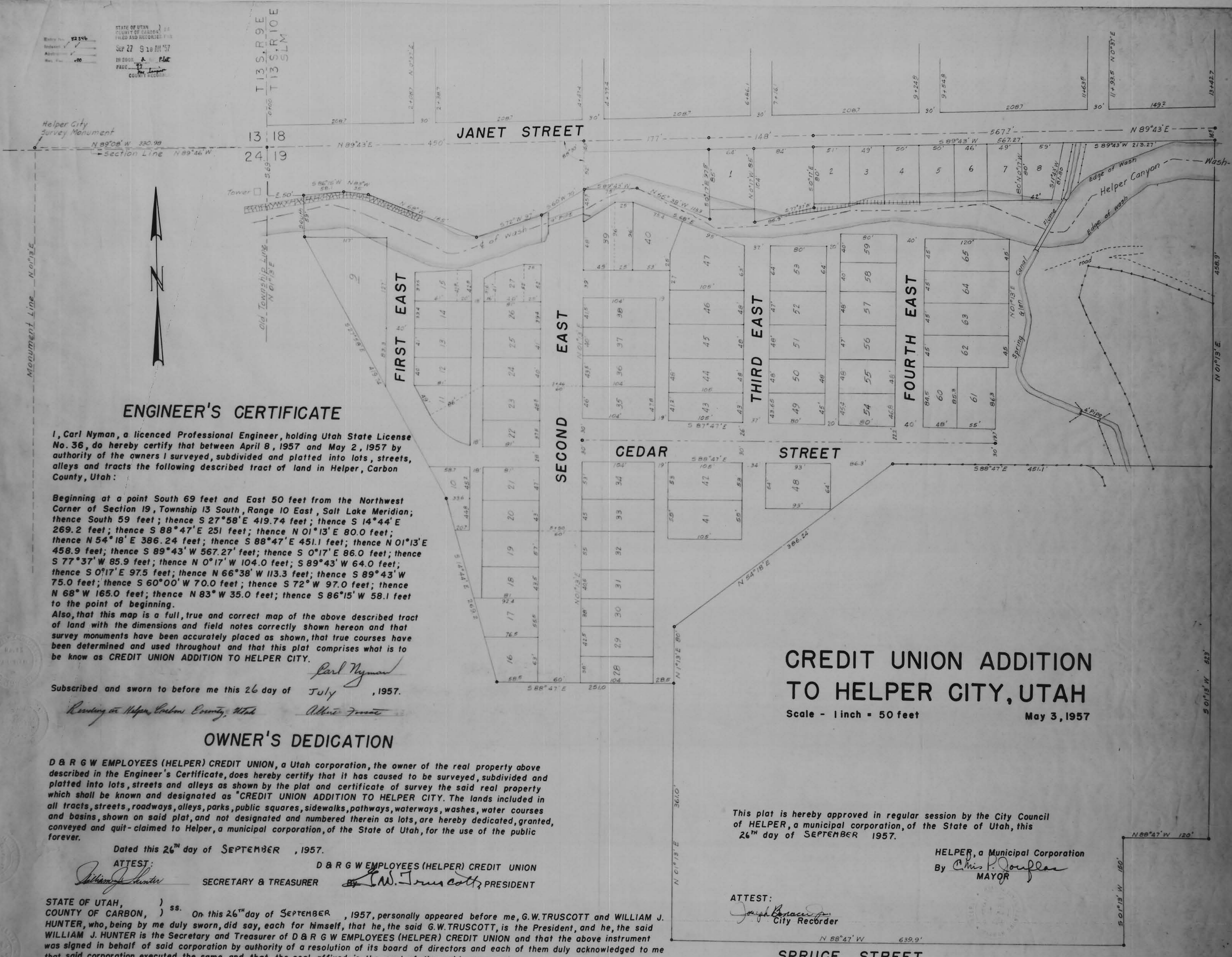


STATE OF UTAH
 COUNTY OF CARBON
 FILED AND RECORDED FOR
 SEP 27 9 18 AM '57
 IN 2008 S. PLAT
 PAGE 17
 COUNTY RECORDS



ENGINEER'S CERTIFICATE

I, Carl Nyman, a licenced Professional Engineer, holding Utah State License No. 36, do hereby certify that between April 8, 1957 and May 2, 1957 by authority of the owners I surveyed, subdivided and platted into lots, streets, alleys and tracts the following described tract of land in Helper, Carbon County, Utah:

Beginning at a point South 69 feet and East 50 feet from the Northwest Corner of Section 19, Township 13 South, Range 10 East, Salt Lake Meridian; thence South 59 feet; thence S 27°58'E 419.74 feet; thence S 14°44'E 269.2 feet; thence S 88°47'E 251 feet; thence N 01°13'E 80.0 feet; thence N 54°18'E 386.24 feet; thence S 88°47'E 451.1 feet; thence N 01°13'E 458.9 feet; thence S 89°43'W 567.27 feet; thence S 0°17'E 86.0 feet; thence S 77°37'W 85.9 feet; thence N 0°17'W 104.0 feet; S 89°43'W 64.0 feet; thence S 0°17'E 97.5 feet; thence N 66°38'W 113.3 feet; thence S 89°43'W 75.0 feet; thence S 60°00'W 70.0 feet; thence S 72°W 97.0 feet; thence N 68°W 165.0 feet; thence N 83°W 35.0 feet; thence S 86°15'W 58.1 feet to the point of beginning.

Also, that this map is a full, true and correct map of the above described tract of land with the dimensions and field notes correctly shown hereon and that survey monuments have been accurately placed as shown, that true courses have been determined and used throughout and that this plat comprises what is to be know as CREDIT UNION ADDITION TO HELPER CITY.

Subscribed and sworn to before me this 26 day of July, 1957.

Carl Nyman
 Residing in Helper, Carbon County, Utah

OWNER'S DEDICATION

D & R G W EMPLOYEES (HELPER) CREDIT UNION, a Utah corporation, the owner of the real property above described in the Engineer's Certificate, does hereby certify that it has caused to be surveyed, subdivided and platted into lots, streets and alleys as shown by the plat and certificate of survey the said real property which shall be known and designated as "CREDIT UNION ADDITION TO HELPER CITY. The lands included in all tracts, streets, roadways, alleys, parks, public squares, sidewalks, pathways, waterways, washes, water courses and basins, shown on said plat, and not designated and numbered therein as lots, are hereby dedicated, granted, conveyed and quit-claimed to Helper, a municipal corporation, of the State of Utah, for the use of the public forever.

Dated this 26th day of SEPTEMBER, 1957.

ATTEST:
William J. Hunter SECRETARY & TREASURER
 D & R G W EMPLOYEES (HELPER) CREDIT UNION
W. Truscott PRESIDENT

STATE OF UTAH,)
 COUNTY OF CARBON,) ss. On this 26th day of SEPTEMBER, 1957, personally appeared before me, G.W. TRUSCOTT and WILLIAM J. HUNTER, who, being by me duly sworn, did say, each for himself, that he, the said G.W. TRUSCOTT, is the President, and he, the said WILLIAM J. HUNTER is the Secretary and Treasurer of D & R G W EMPLOYEES (HELPER) CREDIT UNION and that the above instrument was signed in behalf of said corporation by authority of a resolution of its board of directors and each of them duly acknowledged to me that said corporation executed the same and that the seal affixed is the seal of the said corporation.

MY COMMISSION EXPIRES: 12-13-57
 RESIDING AT HELPER, UTAH

S.V. Litzette
 NOTARY PUBLIC

CREDIT UNION ADDITION TO HELPER CITY, UTAH

Scale - 1 inch = 50 feet
 May 3, 1957

This plat is hereby approved in regular session by the City Council of HELPER, a municipal corporation, of the State of Utah, this 26th day of SEPTEMBER 1957.

HELPER, a Municipal Corporation
 By *Chris P. Douglas*
 MAYOR

ATTEST:
Joseph Bonar
 City Recorder

SPRUCE STREET